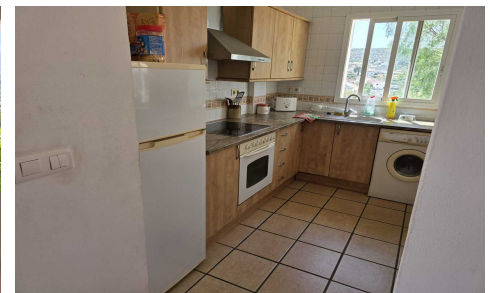


IPG105



End Terrace Villa Cortijo Romero

€210,000



2



1



N/A



N/A



N/A

Set on a single level, this attractive property offers comfortable and practical living in a peaceful setting. Featuring two spacious bedrooms with built-in wardrobes, a modern bathroom, and a bright open living area, the home is designed to make the most of its stunning surroundings. The stylish fitted kitchen provides excellent storage and workspace, while double glazing and underfloor heating ensure year-round comfort. Outside, dedicated parking adds convenience, and the breathtaking panoramic mountain views create a truly special atmosphere. Ideal as a permanent residence, holiday retreat, or investment opportunity.